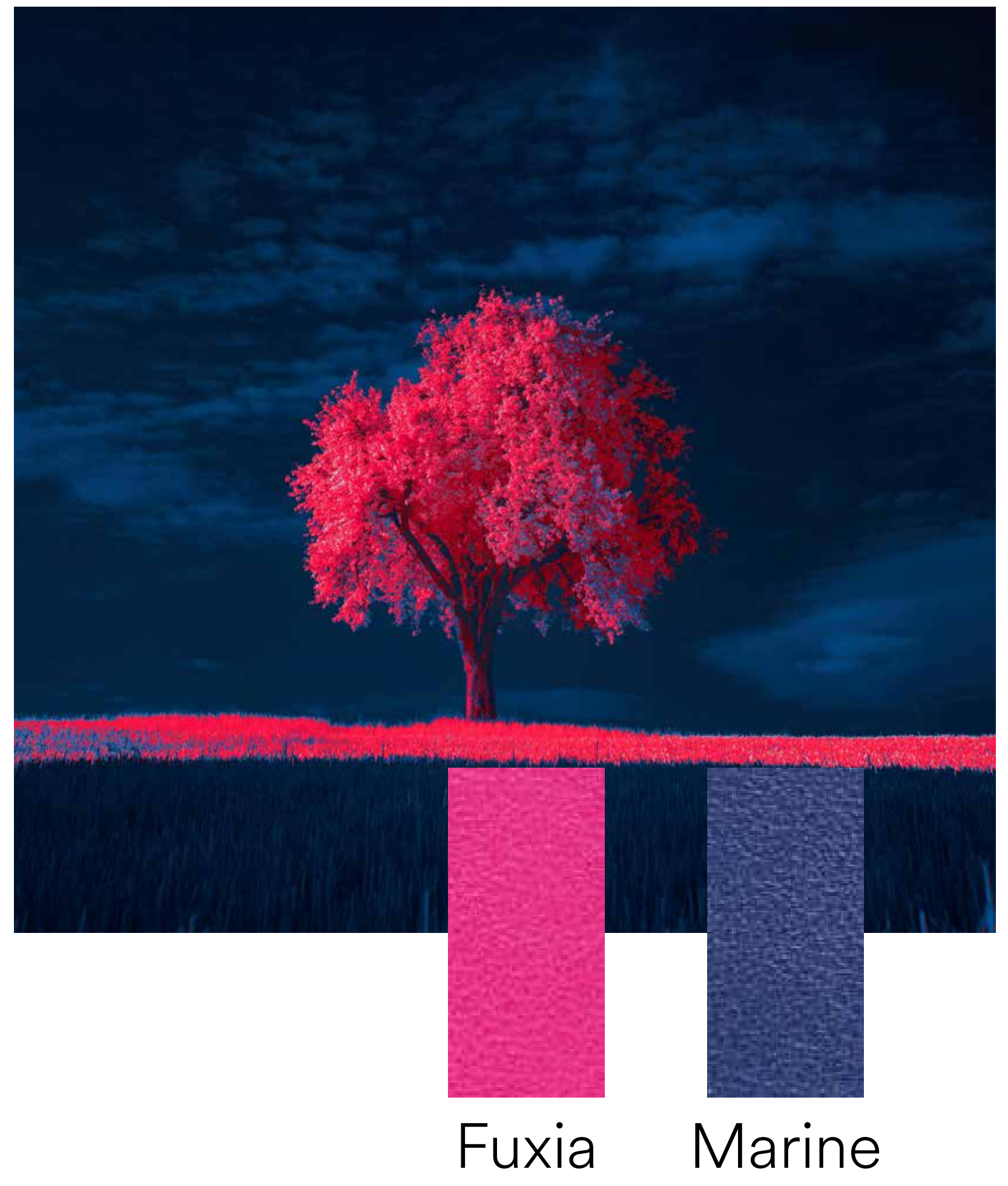


SUSTAINABLE LEATHER®
DANI



Tailor

collection



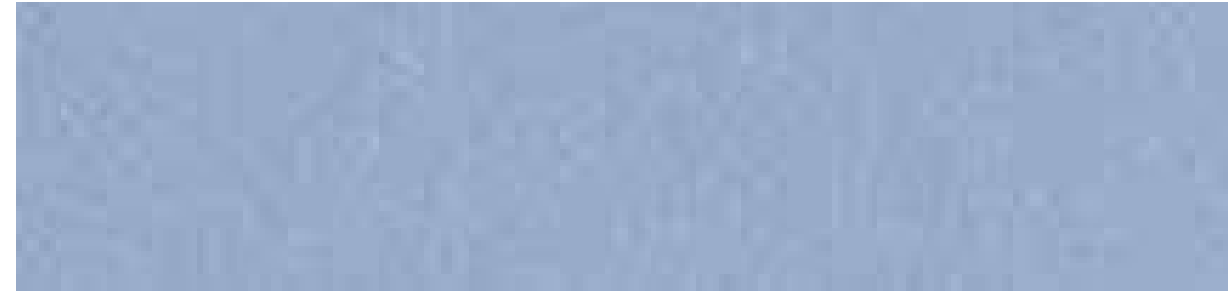
Bright, soft and with a gentle hand, this Nappa is very versatile. Ideal for footwear and elegant leather goods. Tailor lends itself very well to quilting.

High



Off white

Strawberry
Cream



Coronet





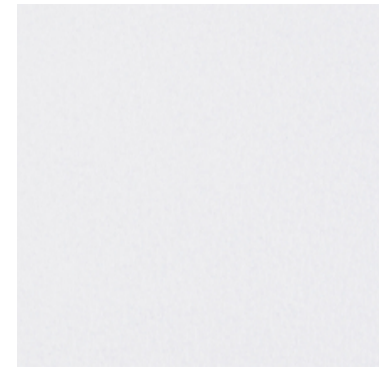
Baby
Blue



Flower

White

Available colours range



White



Off white



Lemon



Mais



High



Bordeaux



Wine



Strawberry
Cream



Rose



Fuxia



Flower



Baby
Blue



Coronet



Marine



Green



Giada



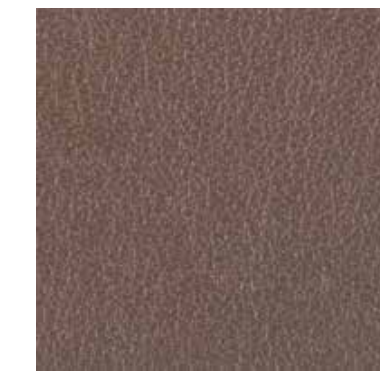
Biscotto



Tan



Chestnut



Taupe



Ebano



Graphite



Black

Tailor

Application: Leather goods, footwear

Thickness: 1.2 - 1.4 mm

Leather size: Half

Colors : 23 colors available

Typology: Pigmented, full grain, through dyeing aniline

Tanning: Chromium salts

Features: Emotional leather

